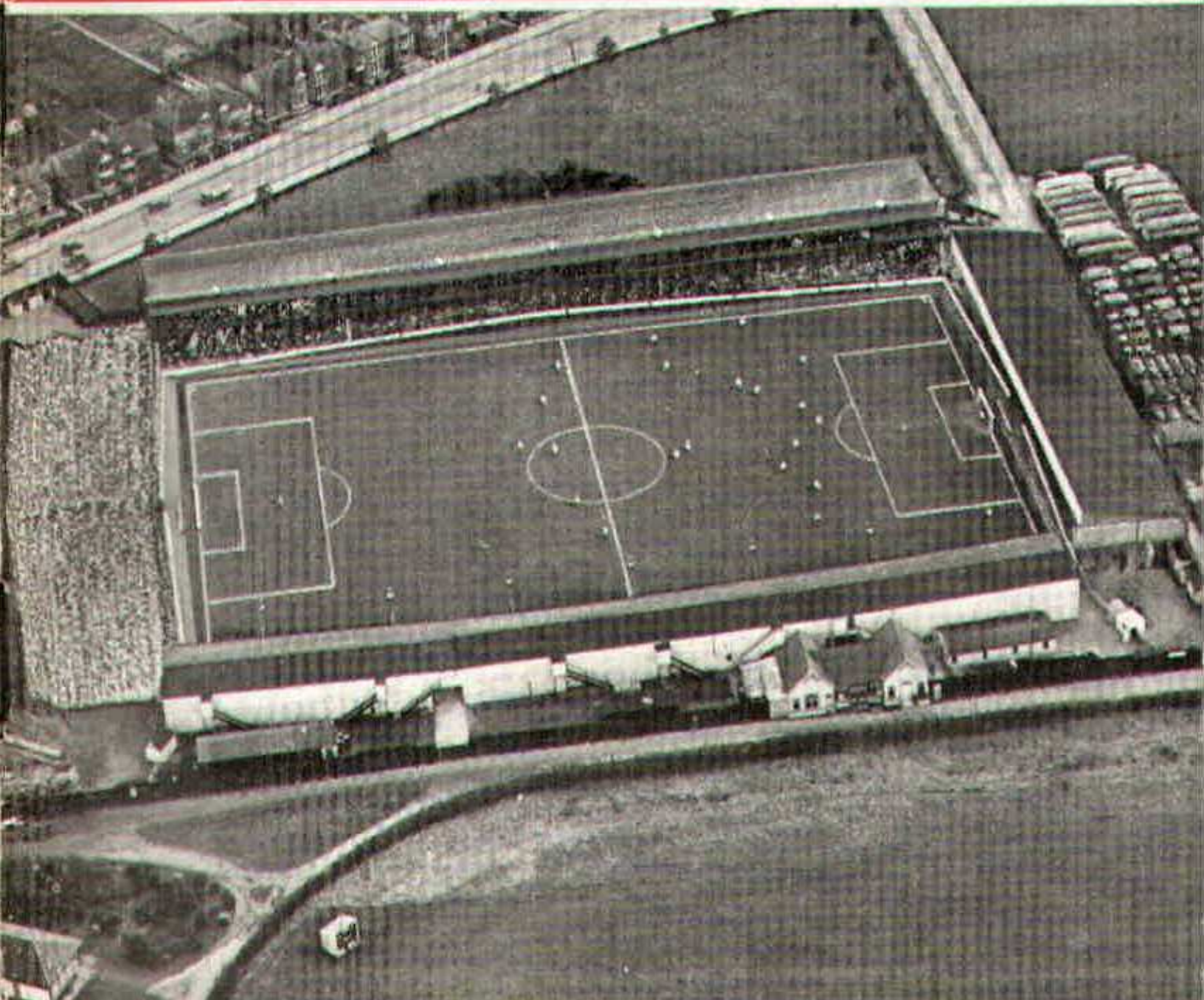


# SWINDON TOWN



## FOOTBALL CLUB

OFFICIAL PROGRAMME 6d.





**FURNITURE AND FURNISHINGS  
OF CHARM AND DISTINCTION**



CARPETS - FLOORCOVERINGS  
LOOSE COVERS - CURTAINS  
SKILLED WORKSHOP REPAIR SERVICE  
AND REMOVALS



Contractors to Government Departments, Hospitals  
and Borough Councils

**MILLS & MERRICKS LTD.**

**16-17 BRIDGE STREET, SWINDON**  
**TELEPHONE 5365/6**

**TUESDAY, 29th JANUARY, 1963**

**F.A. CUP — FOURTH ROUND**

**SWINDON TOWN**

*v.*

**EVERTON**

**Kick-off 7.30 p.m.**

**REFEREE:**

Mr. P. G. BRANDWOOD (Wolverhampton)

**LINESMEN:**

Red Flag -

Mr. R. A. CHAPPELL (Christchurch)

Yellow Flag -

Mr. L. NEWSOM (London)



for fine printing  
you should have  
a fine printer

**BOROUGH PRESS (SWINDON) LTD**

## **Maylott Studios**

For **GROUP & SPORT** Photographs

Official Photographer to  
Swindon Town Football Club

**31 FARINGDON ROAD**

TEL. 22792

## **NOTTON'S CAFE**

**COUNTY ROAD**

200 yards from Ground

**RIGHT ON THE BALL**

## **C. DUNN & SON**

**BUILDERS & DECORATORS**

Alterations, Renovations, Conversions

Plumbers & Sanitary Engineers

**503 CRICKLADE ROAD**

TEL. 22522

## **LEESE, ING & Co. Ltd.**

Mineral Water and  
Squash Manufacturers

**Lansdown Rd., Swindon**

Telephone 22744

"COAL"  
"COAL"  
"COAL"

## **J. WILMER**

**ST. MARGARET'S ROAD  
SWINDON**

Telephone 22535

## **L. Wollen**

OFF LICENCE

**WINES and SPIRITS**

Arkell's Ales and Stout

**373 Cricklade Rd., Swindon**

Deliveries Daily

Phone 3508



# SWINDON TOWN FOOTBALL COMPANY LIMITED

Registered Office: COUNTY GROUND, SWINDON.

## Directors:

Mr. W. J. CASTLE (Chairman)	Mr. H. E. LANE (Vice-Chairman)
Mr. B. T. HAMILTON (Hon. Treasurer)	Messrs. C. CHANDLER, J.P., J. DAVIES,
R. FRICKER, C. J. GREEN, F. PLYER, H. WILLIAMS and K. H. WILMER	
Manager: B. J. HEAD	Secretary: R. A. MORSE

---

**VOL. 13**

**TUESDAY, JANUARY 29th, 1963**

**No. 16**

---

## CLUB NOTES

Here we are with another programme after a long period of inactivity. Our last was issued on 12th January, 1963 — Swindon versus Queen's Park Rangers. What a grand game that was. And the controversy! However, with the passage of time, the whole affair seems to be forgotten. Nevertheless, for Swindon, a resounding victory, and just reward for the initiative and perseverance of the Club.

Present at the game were many managers, scouts and pressmen. We would like to record, for your appreciation, the comment made by one, namely Mr. Trevor Morris, manager of Swansea Town. "I know you won't sell any of your players,



# **WILSONS (SWINDON) LTD.**

**BUILDERS OF MODERN ATTRACTIVE  
HOUSES AND BUNGALOWS**

Enquiries to:

**Head Office:** 90 COMMERCIAL ROAD, SWINDON 6361

**Site Office:** COVENTRY FARM ESTATE, WROUGHTON 271

**Site Office:** QUEENSFIELD ESTATE, STRATTON S.M. 3405

---

**The Rendezvous of all Sportsmen -**

## **THE CROWN INN**

(Host: Frank Plyer)

**Arkell's Best Ales : Fully Licensed**

**Snacks, etc.**

**Stratton St. Margaret Tel. 2339**

Always at your service

## **L. BIBBY**

**For all Types, Rags, Iron and Metal,  
etc. Spot Cash Paid. Please Tel.**

**2101 and our van will call.**

**THE PADDOCK, ERMIN STREET  
STRATTON ST. MARGARET**

---

**FISH**

**POTATOES**

**T. QUALITY (Swindon)  
LTD.**

**Wholesale Merchants**

**COLLEGE STREET**

**TEL. 5446/7**

**For Best Quality Wet Fish**  
9 a.m. - 6 p.m. (except Mondays)

## **YORK ROAD FISHERIES**

**Frying Mid-day Tuesday, Thursday,  
Friday and Saturday**

**Phone 3680**

---

# **MARSHGATE GARAGE**

**MOTOR ENGINEERS :: ROOTES GROUP DEALERS**

**STRATTON ROAD - SWINDON - WILTS.**

**Tel. Swindon 22788**

**TWO MINUTES FROM GROUND**



## CLUB NOTES - continued

but I should like to buy 2,000 of your spectators. They were magnificent and undoubtedly helped the team tremendously". We heartily agree with the last sentence. Thank you, ladies and gentlemen! A well-deserved compliment to all who braved the elements on that wintry afternoon.

A big thank-you, too, to the small but enthusiastic body of supporters who, despite the doubts, and "ifs and buts", travelled to Luton. You were simply grand! Probably only 500 in number against possibly 5,000 who would have travelled under normal weather conditions. You certainly made your presence felt, and, as you all know, made a great impression on the Head of B.B.C. Television (Kenneth Wolstenholme), who gave the commentary on the Sportsview programme.

The "all-ticket" arrangement for this evening's game was made chiefly to ensure safety precautions for all spectators. No doubt some supporters have not been able to obtain the tickets they would have liked, but whatever is organised someone is bound to be disappointed.

The Board spent several hours working out details of the scheme, and at that time everything had to be tentative, because so much was in doubt. The weather, our opponents Barnsley or Everton, and of course we had to play Luton. However, it was decided to go ahead, and as you will realise



# **PANKHURST**

**The Palace - Gorse Hill - Swindon**

**MOTOR CYCLE - SCOOTER AND  
THREE-WHEELER SPECIALISTS**

Open Mon. to Sat. 9 a.m. - 8 p.m.

Phone 5466

---

**Their kit is supplied by**

**SWINDON SPORTS CENTRE**

**WHO HAVE THE BEST SELECTION**

**Tel. 4270**

**114 COMMERCIAL ROAD**

---

**IVOR MESSENGER & SONS**

**High-Class Family Butchers**

**QUALITY WITH ECONOMY :: FAIREST PRICES IN TOWN**

**1 COLLEGE STREET, SWINDON**

**Tel. 5647**

---

**£10 TYPEWRITERS from £10**

**FULLY GUARANTEED**

**Also full selection new standard and portable typewriters  
OFFICE EQUIPMENT**

**DOBELL SHEARMAN  
& Co. Ltd.**

**26 High Street & 33 Faringdon Road, Swindon.**

**Tel. 4961/2**



## **CLUB NOTES**—continued

from your ticket they were printed for the game to take place on Saturday, 26th January. When we finally won at Luton, our emergency plans were immediately put into action. Our thanks are due to everyone who gave up their Sunday, not only to sell the tickets, but with the hundred and one other details which had to be dealt with, not least of all the ground itself and the removal of snow from the terraces and running track. Even on Sunday, several important matters were very much in doubt, namely, the fitness of the playing surface and the floodlighting, in view of past power cuts.

We hope sincerely that everything has worked out smoothly and 25,000 people will enjoy an evening's entertainment.



## DIVISION III

	P.	W.	D.	L.	F.	A.	Pts.
Peterborough United .....	27	14	6	7	65	44	34
<b>SWINDON TOWN</b> .....	<b>25</b>	<b>11</b>	<b>8</b>	<b>6</b>	<b>51</b>	<b>31</b>	<b>30</b>
Watford .....	26	14	2	10	59	44	30
Bournemouth .....	25	10	10	5	34	26	30
Coventry City .....	25	10	10	5	49	40	30
Notts County .....	26	12	6	8	37	40	30
Northampton Tn. ....	24	11	7	6	54	36	29
Southend United .....	26	13	3	10	46	46	29
Queen's Park Rangers	24	11	6	7	50	35	28
Port Vale .....	25	10	7	8	35	30	27
Hull City .....	25	11	5	9	46	40	27
Shrewsbury Town .....	26	9	8	9	58	52	26
Wrexham .....	23	11	2	10	46	49	24
Bristol City .....	25	8	7	10	52	51	23
Barnsley .....	25	9	5	11	36	38	23
Colchester United .....	24	7	8	9	40	52	22
Bradford .....	25	7	8	10	37	50	22
Millwall .....	24	5	11	8	45	50	21
Bristol Rovers .....	24	8	5	11	39	51	21
Brighton & H.A. ....	28	6	9	13	37	53	21
Reading .....	24	9	2	13	41	43	20
Crystal Palace .....	25	5	9	11	28	41	19
Halifax Town .....	25	5	9	11	33	53	19
Carlisle United .....	24	4	7	13	28	51	15



For Quality FLOWERS - FRUIT - VEGETABLES  
also FROZEN FOODS

## **CLARKE'S of Old Swindon**

Proprietors: A. G. G. and J. A. W. HUNT

64 DEVIZES ROAD - SWINDON Phone 22337  
ORDERS DELIVERED

---

## **SEA VIEW CAMP**

Camp Road, Wyke Regis, Weymouth. Tel 3351

Site overlooks Chesil Beach - Ideal for Camping Parties  
Also Modern Caravans for Hire

---

## **Swindon Bacon Curing Co. Ltd.**

Specialists in

BACON - PORK - COOKED HAM

50 FLEET STREET, SWINDON Telephone 22122

---

Meet your friends for an enjoyable evening at

## **THE KINGSDOWN INN**

(Host A. W. Vann)

FULLY LICENSED - ARKELL'S BEERS  
SNACKS - Etc.

STRATTON ST. MARGARET

Tel. 3283





# *At the FINAL WHISTLE*

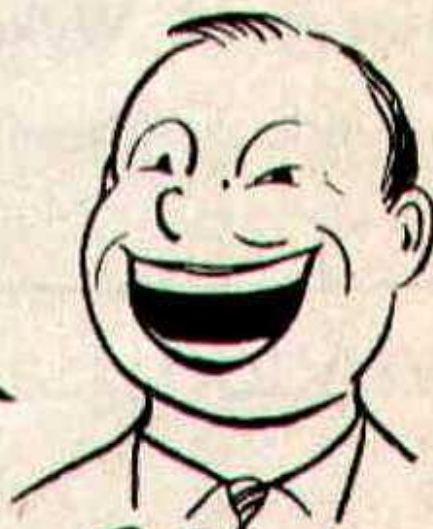
WHETHER YOU FEEL



*Sad*



*Mad* or



*Glad*

**PLEASE  
DO NOT CROSS THE  
PLAYING PITCH**



## OUR VISITORS

This evening we are pleased to welcome to the County Ground one of the outstanding teams of the day, Everton Football Club. In the Club's long and distinguished history, Everton have won the F.A. Cup on two occasions. The first time was in 1905/6 Season, when they beat Newcastle 1—0. They repeated the performance in 1933, when they beat Manchester City 3—0.

Currently, Everton are in the running for First Division honours and are one of the most glamorous teams in the country. With a star-studded side, they appear to be very formidable opposition.

Details of the players are as follows:—

### **GORDON WEST (Goalkeeper)**

Born at Darfield, he was formerly with Blackpool. He is an Under 23 English International. Height 6 ft. 2 ins. Weight 14 st.

### **ALEX PARKER (Right-back)**

A Scottish International, he joined the Club from Falkirk. 5 ft. 8½ ins. 12 st. 5 lbs.

### **MICHAEL MEAGAN (Left-back)**

Born in Dublin, he has represented Eire in International games. 5 ft. 8½ ins. 11 st. 1 lb.

### **JAMES GABRIEL (Right-half)**

Joined Everton from Dundee. He stands 5 ft. 10 ins. and weighs 11 st. 8 lbs. An Under 23 Scottish International.



# **B. J. MARTIN & SONS LTD.**

*Butcher*

10 HIGH STREET  
MARLBOROUGH  
Phone 212

126 VICTORIA ROAD  
SWINDON  
Phone 4860

## **CLARK BROS. (SWINDON) LTD.**

**BUILDING AND CIVIL ENGINEERING  
CONTRACTORS  
SWINDON**

Telephone: Swindon 3417/8/9

Do not let **CHILBLAINS** spoil a good game

**RELAPERNE**

Price 2/6 from your CHEMIST

2/10 Post Paid from

**Ballard & Co. (Chemists) Ltd., Faringdon, Berks.**



## **OUR VISITORS - continued**

### **BRIAN LABONE (Centre-half)**

Liverpool-born, Brian is an English International, 6 ft. 1 in. 13 st. 7 lbs.

### **TONY KAY (Left-half)**

A recent signing from Sheffield Wednesday, Tony is an English Under 23 International, 5 ft. 7½ ins. 11 st. 5 lbs.

### **BILLY BINGHAM (Outside-right)**

A former Luton Town player who has been capped for Ireland, 5 ft. 7½ ins. 10 st. 4 lbs.

### **DENNIS STEVENS (Inside-right)**

Born at Dudley, he joined the Club from Bolton Wanderers, 5 ft. 7 ins. 11 st.

### **ALEX YOUNG (Centre-forward)**

A Scottish International who stands 5 ft. 8 ins. and weighs 10 st. 12 lbs. His former Club was Hearts.

### **ROY VERNON (Inside-left)**

He was signed from Blackburn Rovers. A Welsh International, he stands 5 ft. 9 ins. and weighs 9 st. 10 lbs.

### **JOHN MORRISEY (Outside-left)**

A former Liverpool player, he is an Under 23 English International, 5 ft. 7 ins. 11 st. 11 lbs.

Such is the strength of Everton! An impressive line-up of the cream of soccer talent. Can we hold them? Tonight will tell. Whatever the result, we are assured of a great game of football.



# DIVISION III FIXTURE LIST

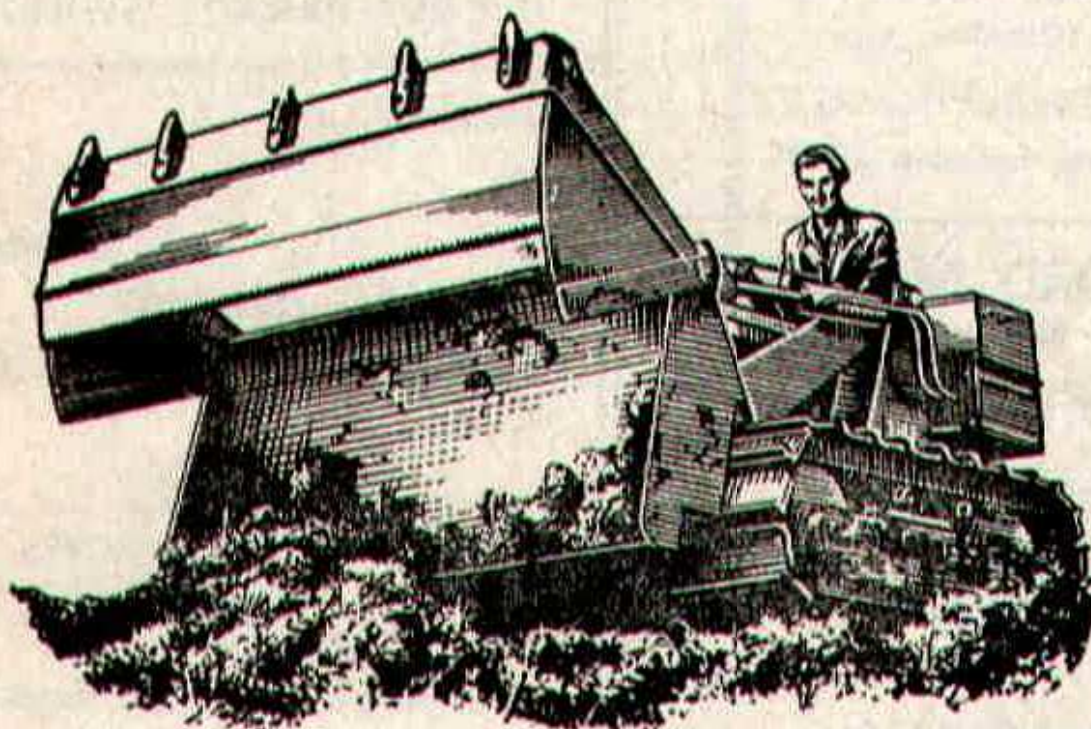
Date	Opponents	Ground	Result
August 18	BARNLEY	(A)	1-1
21	COVENTRY CITY	(H)	4-1
25	NORTHAMPTON TOWN	(H)	2-3
28	COVENTRY CITY	(A)	0-2
September 1	QUEEN'S PARK RANGERS	(A)	2-2
4	BRIGHTON and HOVE ALBION	(A)	1-1
8	HULL CITY	(H)	2-0
11	BRIGHTON and HOVE ALBION	(H)	5-1
15	CRYSTAL PALACE	(A)	0-0
18	CARLISLE UNITED	(A)	0-0
22	WREXHAM	(H)	3-0
25	DARLINGTON (Cup)	(H)	4-0
29	HALIFAX TOWN	(A)	3-4
October 2	BRISTOL ROVERS	(H)	3-0
6	WATFORD	(H)	3-1
9	BRISTOL ROVERS	(A)	0-2
13	BRISTOL CITY	(A)	2-2
20	READING	(H)	1-1
27	PORT VALE	(A)	1-2
November 3	(1) READING	(H)	4-2
10	MILLWALL	(A)	4-3
17	SOUTHEND UNITED	(H)	4-1
24	(2) YEOVIL	(A)	2-0
December 1	NOTTS COUNTY	(H)	3-1
8	BOURNEMOUTH and B.A.	(A)	0-0
15	BARNLEY	(H)	2-1
22	NORTHAMPTON TOWN	(A)	P
26	BRADFORD	(A)	0-2
29	BRADFORD	(H)	P
1963			
January 5	(3) LUTON TOWN	(A)	P
12	QUEEN'S PARK RANGERS	(H)	5-0
14	COLCHESTER UNITED	(A)	P
19	HULL CITY	(A)	0-0A
26	(3) LUTON TOWN	(A)	2-0
29	(4) EVERTON	(H)	
February 2	CRYSTAL PALACE	(H)	
9	WREXHAM	(A)	
16	(5) HALIFAX TOWN	(H)	
23	WATFORD	(A)	
March 2	BRISTOL CITY	(H)	
8	(6) READING	(A)	
16	PORT VALE	(H)	
23	SHREWSBURY TOWN	(A)	
30	(S.F.) MILLWALL	(H)	
April 6	SOUTHEND UNITED	(A)	
12	PETERBOROUGH UNITED	(H)	
13	COLCHESTER UNITED	(H)	
15	PETERBOROUGH UNITED	(A)	
20	NOTTS COUNTY	(A)	
27	BOURNEMOUTH and B.A.	(H)	
May 4	(FINAL)		



# H. HIBBERD LIMITED

40 NEWPORT STREET - SWINDON

PLANT HIRE



TRACTORS and SCRAPERS

BULLDOZERS

DROTT SHOVELS

J.C.B. and DINKUM DIGGERS

ROAD ROLLERS

TELEPHONE: SWINDON 6125



## Hatton's Newsagency

A. J. D. Woodhouse and A. Smith

**Newsagents :: Tobacconists  
Confectioners**

Agents for Wessex School of  
Motoring

Main Booking Agents for Millers  
Coaches

6 Regent Circus (near G.P.O.)

Telephone Swindon 22731

## HULFORD MOTORS Ltd.

### SELF DRIVE HIRE

Fleet of 1962 Fords  
Populars - Anglias - Consuls

### SHRIVENHAM ROAD

(200 yards from Football Ground)

Phone 4934

Large Car Park available

For High Class  
Central Heating, Plumbing  
Painting and Decorating  
Electrical Installations  
and Repairs

## NORTH WILTS Sanitary & Heating Co. Ltd

NEWPORT ST., SWINDON

Phone 5373/4

## WARNES (Swindon)

Electrical Contractors - Radiators

Contractors to SWINDON TOWN

160 COUNTY ROAD, SWINDON  
9 SWINDON STREET, HIGHWORTH  
7 CLIVE PARADE, SWINDON

RIGHT WING

SWINDON

Turner

Owen (2)

Tr

Morgan (4)

McPherson (5)

Summerbee (7)

Hunt (8)

Smith (9)

Swindon Colours:

RED SHIRTS, WHITE SHORTS



Morrissey (11)

Vernon (10)

Young (9)

Kay (6)

Labone (5)

Meagan (3)

West

LEFT WING

EVERTON

## WARNES T.V.

TO BE SUR

51 Commercial Road - Swindon

and Branches



## (Swindon) LTD.

tors - Radio and Television

INDOM TOWN FOOTBALL CLUB

ON  
ORTH

PHONE 6346/7

PHONE 379

PHONE 6346/7

SWINDON

LEFT WING

Turner

Trollope (3)

McPherson (5)

Woodruff (6)

Smith (9)

Jackson (10)

Rogers (11)

FOOTBALL  
PINK

These teams are subject  
to alteration

Young (9)

Stevens (8)

Bingham (7)

Labone (5)

Gabriel (4)

3)

Parker (2)

West

EVERTON

RIGHT WING

## T.V. RENTALS

BE SURE

ad - Swindon - Phone 6486

and Branches

## McILROYS

### RESTAURANT

for morning coffee,  
luncheon and  
afternoon tea - in  
pleasant surroundings -  
you will find McIlroys  
are top of the  
'league'.

Full table service, best Beers  
and Wines. Parties and  
Functions catered for.

### McIlroys Restaurant

64-72 Regent Street

Tel. 5294



THE ALCOHOL FUEL

### COATE GARAGE

REPAIRS - OVERHAULS - WELDING  
SERVICING - REBORING - TYRES

Props. E. V. & W. H. Mattick

Marlborough Rd., Swindon



## SUPPORTERS' CLUB NOTES

The Queen's Park Rangers match may have produced what will probably be the smallest crowd of the season, but seldom can the County Ground ever have had a larger "gate" of Press reporters. Rarely were there so few matches to be witnessed by so many, with the result that the Press Box accommodation was inadequate — a number of the displaced gentlemen had to sit in the body of the stand, and the writer of these humble notes found himself surrounded by professional journalists.

It was interesting to observe their various methods. Some wrote continuously throughout the game; others made copious notes at regular intervals; a few made occasional marks in the margins of their programmes, while one or two apparently just hoped, like ourselves, that inspiration would come at the appropriate time.

We shall be holding a Dinner and Dance at Messrs. McIlroy's on February 18th, and hope for a good attendance. Harry Smith's Band has been engaged. The Dinner will commence at 7.30 p.m. and tickets for the whole event will be 12/6d. Dancing will take place from 9.0 p.m. to 1 a.m., and the cost of tickets for the Dance alone will be 4/-.

Tickets will be available at our Headquarters, and from our Social Secretary before any match. The last date for sale will be Thursday, 14th February, on which date we have to notify Messrs. McIlroy's of the number to attend.

We hope that the Directors of Swindon Town F.C., with Officials and Players, will be present, and look forward to seeing a good assembly of members.

On numerous occasions we have referred in these notes to the loyal support and work which the Football Club and our



HAVE YOU SIGNED ON YET

FOR  
YOUR

# SWINDON ECHO

4d.  
WEEKLY

IF NOT THEN DO SO AT YOUR LOCAL NEWSAGENT  
AND JOIN OUR GROWING TEAM OF READERS

---

For your pleasure try

## RIVERSIDE LECHLADE LTD.

Tea Room and Gardens - Boating

4 Berth and 2 Berth Cabin Cruisers for hire, also Motor Boats,  
Camping Punts, Rowing Boats, Canoes, etc. Parties catered for.

PRIVATE CAR PARK

Telephone: Lechlade 229

---

## Little & Co. Ltd.

Try us for  
Clothes for all  
the family on  
all occasions

31-32 FLEET STREET  
SWINDON

Tel.

22831

We have a  
reputation for  
**Value & Service**  
that is second  
to none

THE POPULAR MEN'S & LADIES'  
COMPLETE OUTFITTERS

---

SEE THE LOVELY SELECTION OF  
CHOCOLATES AND SWEETS  
Greetings Cards a Speciality

## CECIL GREEN

CONFECTIONER AND TOBACCONIST

13 VICTORIA ROAD

Telephone 4416



## SUPPORTERS' CLUB NOTES - continued

organisation receives from the good people living in the surrounding country districts. An example of this was apparent recently, when one of our Competition agents, living in the Devizes area, found himself unable to travel by his normal route, owing to the condition of the roads. Determined to hand over his cash and ticket counterfoils, he made a detour of more than thirty miles, in order that he might keep faith with the Club and with his "customers".

A club which is able to call on the services of such people is indeed fortunate. The gate on the occasion of the visit of Queen's Park Rangers was reduced by reason of the inability of many country supporters to travel. They themselves were most disappointed, for they are among the most regular to attend at the County Ground.

Thank you, once again, to all of our country members and friends, for your continued help and support.

An apology next — the writer has been in the doghouse! In the previous notes, mention was made of the unavoidable increase in the sale price of our Club Badges. Unfortunately, we quoted the wrong figures. It has been found necessary to charge 1/6 in future, and not 1/3. We stated that the price would be increased from 1/- to 1/3 — quite inexcusably, as we had mentioned the correct amounts in other notes which did not see the light of day, owing to the postponement of the match on 29th December.

The Handbooks for Season 1962/3 have now arrived and may be obtained at our Headquarters. A good collection of photographs has been published, so that the books should be of interest to younger supporters. The price is one shilling.



F. J. ROPER  
DEVIZES RD.  
SWINDON

Phone 22341

FERNDALE  
FISHERIES  
FERNDALE RD.  
SWINDON

Phone 3614

**SWINDON'S  
FINEST  
FISH and CHIPS**

**CALL ON  
YOUR  
WAY  
HOME**

F. J. ROPER  
CLIFTONIAN  
38 WILLIAM ST.  
SWINDON  
Phone 3785

**WE SHALL BE  
WAITING  
TO  
SERVE YOU**

**Menu**

**Plaice  
Hake  
Cod  
Skate**

F. J. ROPER  
HIGH ST.  
WOOTTON  
BASSETT

F. J. ROPER  
CROSS HAYES  
MALMESBURY



# PLAYERS' APPEARANCES & GOAL SCORERS WILTSHIRE PREMIER LEAGUE

			Appearances	Goals
Blackwell	...	...	5	-
Buckingham	...	...	5	-
Lloyd	...	...	17	-
Shergold	...	...	15	2
Harvey	...	...	6	1
Peapell	...	...	11	1
Wells	...	...	1	-
Tabor	...	...	8	1
Plumb	...	...	11	10
Colsell	...	...	12	4
Ling	...	...	14	1
Hicks	...	...	12	-
Hellin	...	...	13	-
Rogers	...	...	10	5
Kelly	...	...	3	1
Loveday	...	...	3	1
Harber	...	...	12	1
Woolford	...	...	2	-
James	...	...	5	3
Mellor	...	...	7	8
O'Hara	...	...	4	-
Dawson	...	...	7	-
Summerbee	...	...	1	1
Leggett	...	...	11	4
Stephens	...	...	8	23
Weaver	...	...	7	5
McPherson	...	...	4	-
Chamberlain	...	...	3	2
Smart	...	...	4	8
Atkins	...	...	3	1
Newberry	...	...	2	-
Brookes	...	...	1	-
Scott	...	...	1	-
Hughes	...	...	2	-
Collins	...	...	1	-
Reynolds	...	...	2	-
Masters	...	...	5	-
Huxford	...	...	4	1



This space is reserved for

**EDWIN H. BRADLEY & SONS LTD.**

**Builders - Swindon**

---

***Eric***

(E. Ayliffe)

**GENTLEMEN'S HAIRDRESSER**

**57/59 Faringdon Road, Swindon.**

**Phone 4569**

**APPOINTMENTS MAY BE BOOKED IN PRIVATE SALON**

---

**ALSTON & YOUNG LTD.**

**121-123 CRICKLADE ROAD, SWINDON.**

**Tel. 6671**

**Scooter and Three-Wheeler Specialists**

**Main Agents - LAMBRETTA - VESPA - TROJAN**

**First class after sales service**

**Open daily 9.0 a.m. to 7.30 p.m.**

---

**SUPPORT YOUR HOME**

**CIVIL DEFENCE**

**Plays a vital part in saving lives  
in PEACE or WAR**

**Particulars:**

**CIVIC OFFICES, SWINDON**

---

**WISES CATERING  
SERVICE**

**(Reg. Wise)**

**Our Caterer for the past 14 seasons  
Guarantees**

**A GOOD CUP OF TEA AT THE  
COUNTY GROUND**

**A full range of Sweets & Cigarettes  
at any of our five kiosks on your  
way in. ENJOY YOURSELF!**



## FORTHCOMING MATCHES

SATURDAY NEXT, FEBRUARY 2nd, 1963

Division III

**SWINDON TOWN**

v.

**CRYSTAL PALACE**

Kick-off 3 p.m.

---

TUESDAY, FEBRUARY 12th, 1963

Football Combination

**SWINDON TOWN**

v.

**MILLWALL**

Kick-off 7.30 p.m.

---

SATURDAY, FEBRUARY 16th, 1963

Division III

**SWINDON TOWN**

v.

**HALIFAX TOWN**

Kick-off 3 p.m.



# **BRETTS** PET AND GARDEN SUPPLIES

**32-33 COMMERCIAL ROAD**

and

**6 CROMWELL STREET - SWINDON**

---

When thinking of your new  
T.V. - Radio - Washing Machine - Refrigerator  
make your **GOAL**

## **HOLMES & LUCAS**

**14 REGENT STREET - SWINDON**

Stockists of all leading makes

Telephone 22526-4721

---

FOR ALL YOUR ANGLING NEEDS  
CONSULT

### **FRANK WOODWARD**

Swindon's Fishing Tackle Specialist

**25 HAVELOCK ST., SWINDON**  
PHONE 3879

For Paints of Good Quality

### **H. S. HODGES & SONS**

(SWINDON) LTD.

**CRICKLADE RD. - SWINDON**  
PHONE 22422

Dulux, Brolac, Friary, Valspar,  
Wallcharm, etc.

---

### **SOUTHERN LAUNDRY**

**Co. Ltd.**

Launderers and Dry Cleaners

**STATION ROAD - SWINDON**  
**TELEPHONE 4161**

---

### **COMLEY'S**

Modern Music Centre

**26 HAVELOCK ST., SWINDON**

RECORDS - MUSIC - INSTRUMENTS

Top Twenty 'Pops' always in stock  
and wide selection of Jazz & Classics

Personal Supervision      **Phone 3874**



# FOOTBALL COMBINATION

## Fixtures and Results to date

Date	Opponents	Ground	Result
August 18	SOUTHEND	(H)	3-1
21	MILLWALL	(A)	1-2
25	BOURNEMOUTH and B.A.	(A)	3-1
September 1	CHELSEA	(H)	0-2
3	WATFORD	(A)	2-2
18	QUEEN'S PARK RANGERS	(H)	3-2
26	SOUTHAMPTON	(A)	3-3
October 23	COVENTRY CITY	(H)	2-0
27	ALDERSHOT	(H)	0-0
November 7	LEYTON ORIENT	(A)	3-6
10	BRIGHTON	(H)	1-0
27	BRENTFORD	(H)	2-2
December 8	CHARLTON	(A)	2-2
11	FULHAM	(H)	6-1
19	PORTSMOUTH	(A)	3-1
22	BIRMINGHAM	(A)	0-3

### 1963

January 1	READING	(H)	P
9	READING	(A)	P
15	BOURNEMOUTH and B.A.	(H)	3-1
19	SOUTHEND	(A)	P
29	WATFORD	(H)	
February 4	QUEEN'S PARK RANGERS	(A)	
12	MILLWALL	(H)	
23	CHELSEA	(A)	
26	SOUTHAMPTON	(H)	
March 6	COVENTRY CITY	(A)	
9	ALDERSHOT	(A)	
19	LEYTON ORIENT	(H)	
23	BRIGHTON	(A)	
April 6	BIRMINGHAM	(H)	
9	BRENTFORD	(A)	
16	CHARLTON	(H)	
22	FULHAM	(A)	
30	PORTSMOUTH	(H)	



# WILTSHIRE PREMIER LEAGUE

## Fixtures and Results to date

Date	Opponents	Ground	Result
August 18	RADSTOCK	(H)	1-1
22	PINEHURST	(A)	1-4
25	STONEHOUSE	(A)	3-0
29	PINEHURST	(H)	1-0
September 1	PURTON	(H)	3-1
8	CALNE	(A)	2-0
15	DEVIZES	(H)	6-1
19	FROME	(A)	1-3
22	TROWBRIDGE	(H)	2-0
29	FROME	(H)	3-0
October 6	WARMINSTER	(H)	3-1
13	PEASEDOWN	(A)	2-1
20	CLANDOWN	(H)	6-0
27	PAULTON	(A)	1-1
November 3	WESTBURY	(H)	5-4
10	MELKSHAM	(A)	0-3
24	CHIPPENHAM	(H)	6-1
December 1	WOOTTON BASSETT	(A)	4-1
8	PAULTON R.	(H)	5-2
15	STONEHOUSE	(H)	4-0
22	PURTON	(A)	5-0
29	CALNE	(H)	P

### 1963

January 5	DEVIZES	(A)	P
19	WARMINSTER	(A)	P
26	PEASEDOWN	(H)	20-1
February 2	CLANDOWN	(A)	
9			
16	WESTBURY	(A)	
23	MELKSHAM	(H)	
March 2	CHIPPENHAM TOWN	(A)	
9	WOOTTON BASSETT	(H)	
16	SWINDON B.R.	(A)	
23	RADSTOCK	(A)	
	TROWBRIDGE (to be arranged)	(A)	



# THE FOOTBALL COMBINATION

## MID-WEEK SECTION

			P.	W.	D.	L.	F.	A.	Pts.
Birmingham City	...		16	10	5	1	41	14	25
SWINDON TOWN	....		17	8	5	4	38	29	21
Millwall	....	...	14	9	2	3	29	13	20
Chelsea	...	...	18	5	9	4	28	24	19
Portsmouth	...	...	14	8	2	4	38	19	18
Leyton Orient	...	...	15	9	0	6	40	24	18
Southampton	...	...	16	7	2	7	29	26	16
Coventry City	...	...	15	6	4	5	23	23	16
Brighton & Hove Albion	...		18	7	2	9	21	29	16
Brentford	....	...	14	6	3	5	31	21	15
Southend United	...	...	16	6	3	7	37	36	15
Watford	...	...	16	5	5	6	27	31	15
Bournemouth & Boscombe			17	5	5	7	23	35	15
Queen's Park Rangers	...		14	5	3	6	30	29	13
Fulham	...	...	17	5	3	9	19	33	13
Charlton Athletic	...	...	17	5	1	11	29	60	11
Aldershot	...	...	14	4	2	8	16	35	10
Reading	...	...	14	1	4	9	20	38	6



**G. A. STREETLY**

**Tobacconist and Confectioner**

**10 BOURNE ROAD - MOREDON - SWINDON**

Telephone: 4956

---

**ADVERTISING SPACE**

**IN THIS PROGRAMME**

**TO LET**

Apply:-

SECRETARY,  
SWINDON TOWN F.C.,  
COUNTY GROUND, SWINDON



Have you purchased your ticket for the

# **DEVELOPMENT FUND COMPETITION?**

**TICKETS 1/- each**

**Draw at half-time Saturday for**

**£100 & £25**

**other Prizes Monday to Friday**

**£20 EACH DAY**

Results published daily in -

"Daily Sketch"

"Evening Advertiser" and

"Bristol Evening Post"



# PARK DRIVE



for pleasure

**PLAIN 20 for 3/5    TIPPED 20 for 2/10**



# PLAYERS APPEARANCES AND GOAL SCORERS

## Division III

## F.A. Cup & Lge Cup

Appearances Goals Appearances Goals

Turner	21	-	5	-
O'Hara	4	-	-	-
Wollen	21	-	4	-
Trollope	25	1	5	-
Morgan	25	-	5	-
Owen	20	-	3	-
Woodruff	25	2	5	-
Summerbee	16	2	5	-
Darcy	17	4	3	-
Hunt	24	10	5	3
Smith	25	14	5	5
Atkins	4	-	-	-
Smart	7	2	-	-
Jackson	24	13	5	4
McPherson	9	-	3	-
Stevens	1	-	-	-
Rogers	6	2	2	-

## Football Combination

O'Hara	.....	.....	11	-
Hicks	.....	.....	4	-
Turner	.....	.....	2	-
Hellin	.....	.....	15	-
Dawson	.....	.....	17	-
Smart	.....	.....	13	3
McPherson	.....	.....	7	-
Harber	.....	.....	17	-
Shergold	.....	.....	14	-
Darcy	.....	.....	3	1
Stevens	.....	.....	16	16
Leggett	.....	.....	14	4
Weaver	.....	.....	9	3
Rogers	.....	.....	11	2
Colsell	.....	.....	2	-
Atkins	.....	.....	9	4
Summerbee	.....	.....	2	1
Mellor	.....	.....	3	-
Leyton	.....	.....	1	-
Jackson	.....	.....	1	-
Huxford	.....	.....	7	-
Owen	.....	.....	1	-
Peapell	.....	.....	1	-



## STAND TICKETS

Tickets for seats in the Old and New Stands may be booked in advance. Postal applications should be accompanied by a remittance and stamped addressed envelope. Tickets ordered by telephone must be collected not later than 12 noon on the day of the match, otherwise they will not be reserved.

Prices for League Matches:-

**New Stand:** Block C-6/6 (Centre)

Blocks B and D-5/6 (Side Stands)

Blocks A and E-4/6 (Wing Stands)

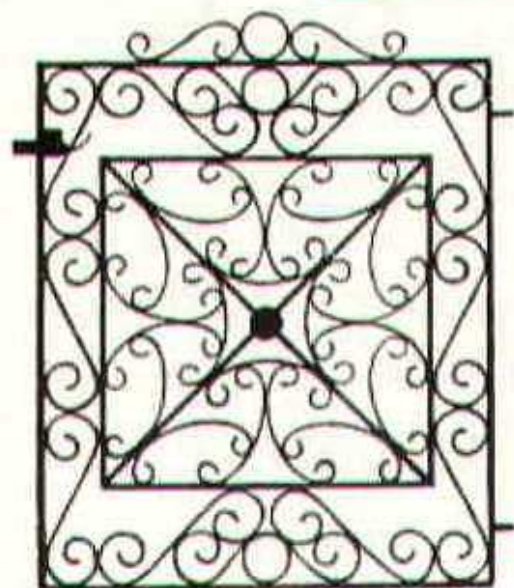
**Old Stand:** Centre Box-8/-

Block H-5/6 (Centre)

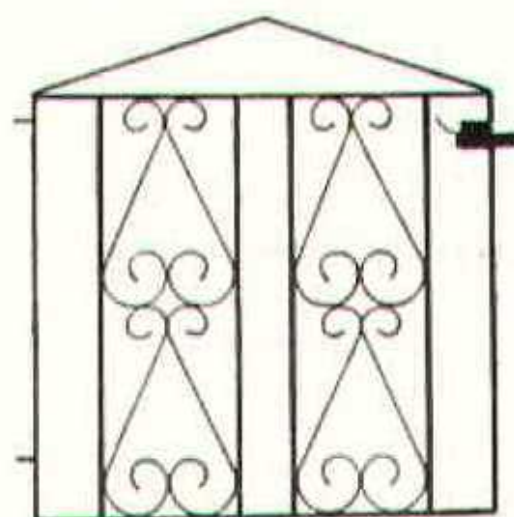
Blocks F, G and I-4/- (Side Stands)

Postal applications to: Secretary, Swindon Town F.C., County Ground, Swindon, Wilts. Telephone Swindon 22118.





T.G. 621



T.G. 626

**Gates from 58/-**  
Singles and Doubles

If you live in the Swindon  
area we will measure your  
Gateway for you.

---

Our Decorative Ironwork  
also includes:

FIRESCREENS  
COFFEE TABLES  
LAMPS  
BRACKETS  
CORNER TABLES  
BALUSTRADES

**SEND FOR FREE CATALOGUE**  
**MARTYN LYNSHAW LIMITED**

**20 Boundary Works, Stratton Road,  
SWINDON. TEL. 4177**